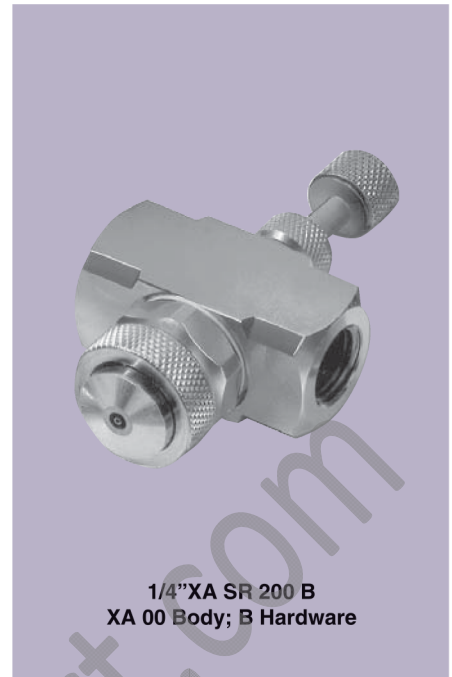
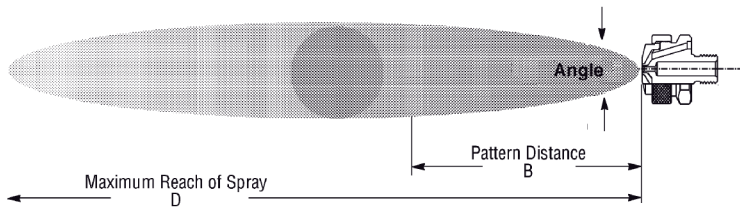


# XASR

## Siphon-fed Round

### DESIGN FEATURES

- Lowest flow available
- Very fine atomization
- Narrow spray angle (12°- 22°)
- Full cone pattern
- Short to moderate forward spray projection



1/4" XASR 200 B  
XA 00 Body; B Hardware

Dimensions are approximate. Check with BETE for critical dimension applications.

### XASR Set-up Flow Rates and Dimensions

Siphon-fed, External Mix, Round Spray Pattern, 1/8" and 1/4" Pipe Sizes, BSP or NPT

Pipe Size	Spray Set-up Number	Fluid and Air Cap Numbers	ATOMIZING AIR		Liquid Capacity in l/h (Liters Per Hour)								Spray Dimensions at 200 mm. Siphon Height				
			Air (bar)	Air Capacity (Nm <sup>3</sup> /h)	Gravity Head				Siphon Height				Air (bar)	Spray Angle (deg.)	B (mm)	D (m)	
					450 mm	300 mm	150 mm	100 mm	200 mm	300 mm	600 mm	900 mm					
1/8 or 1/4	SR 050	Fluid Cap FC7 & Air Cap AC 1201	0.7	0.66	1.5	1.3	1.1	0.9	0.7	0.5	0.6	0.8	0.9	0.7	18	280	1.8
			1.5	1.02	1.8	1.7	1.5	1.3	1.2	1.1	1.1	1.2	1.2	1.5	18	280	1.9
			3.0	1.68	2.1	1.9	1.7	1.5	1.4	1.3	1.1	1.1	0.8	3.0	18	300	2.3
			4.0	2.16	2.2	2.0	1.8	1.6	1.5	1.4	1.2	0.9	4.0	18	360	2.6	
	SR 150	Fluid Cap FC4 & Air Cap AC1201	0.7	0.78	2.4	2.1	1.7	1.5	1.2	0.8				0.7	18	300	2.1
			1.5	1.20	2.8	2.6	2.4	2.1	1.9	1.6	0.9			1.5	18	330	2.3
3.0			1.92	3.4	3.1	2.9	2.8	2.6	2.4	1.7	1.1		3.0	18	380	2.6	
4.0			2.46	3.7	3.4	3.3	3.1	2.9	2.7	2.1	1.5		4.0	19	430	3.0	
SR 200	Fluid Cap FC4 & Air Cap AC1202	0.7	1.38	2.5	2.3	2.0	1.6	1.4	1.1				0.7	18	300	2.4	
		1.5	2.16	2.9	2.8	2.5	2.2	2.0	1.7	0.9			1.5	18	330	2.7	
		3.0	3.48	3.4	3.3	3.2	2.9	2.8	2.5	1.9	1.2		3.0	19	380	3.4	
		4.0	4.44	3.7	3.6	3.5	3.4	3.3	3.0	2.5	2.0		4.0	20	430	4.0	
SR 250	Fluid Cap FC3 & Air Cap AC1202	0.7	1.14	4.5	4.0	3.4	2.1	1.8	1.4				0.7	21	380	3.0	
		1.5	1.86	5.3	4.9	4.4	3.5	2.9	2.7	1.8			1.5	21	410	3.4	
		3.0	3.00	6.0	5.6	5.0	4.4	4.0	3.4	2.4	1.2		3.0	21	460	4.0	
		4.0	3.90	5.7	5.4	5.0	4.2	3.9	3.5	2.8	1.9		4.0	22	510	4.6	
SR 400	Fluid Cap FC1 & Air Cap AC 1204	1.5	3.48	22	19.9	16.3	12.3	10.5	8.3	2.8			1.5	17	460	3.7	
		3.0	5.28	25	23	19.5	16.7	14.2	11.5	6.4	2.8		3.0	18	510	4.3	
		4.0	6.66	26	24	21	18.4	15.7	12.9	7.9	4.5		4.0	18	530	4.9	
		5.6	8.82	26	24	22	19.7	17	14.6	9.8	6.1		5.6	19	580	5.5	
SR 450	Fluid Cap FC5 & Air Cap AC 1205	2.0	8.64				27	22	16.8				2.0	20	510	6.7	
		3.0	11.4				30	26	21				3.0	20	530	7.0	
		4.0	14.4		43	40	31	28	23				4.0	21	580	7.6	
		5.6	18.9	44	42	39	31	28	24	11.0	8.3		5.6	22	630	8.2	

Standard Materials: Nickel-plated Brass, 303 Stainless Steel, and 316 Stainless Steel

AIR ATOMIZING